

ezTime™
for HDDGuarder™ recovery card

Manual
Version 1.00

HDDGuarder Technology Co., Ltd.

Aug 20, 2004

<http://www.HDDGuarder.com>

- CHAPTER 1 OVERVIEW 3
 - 1-1 What's ezTime™?..... 3
 - 1-2 How does ezTime™ work?..... 3
- CHAPTER 2 INSTALLATION/UN-INSTALLATION 3
 - 2-1 Very Important..... 3
 - 2-2 Environment 3
 - 2-3 Installation Steps..... 3
 - 2-4 Un-installation Steps 3
- CHAPTER 3 USER GUIDE 4
 - 3-1 Interface 4
 - 3-2 Only Manager Can Save ezTime™ Configuration 4
 - 3-3 Recovery Day 4
 - 3-4 Recovery Time 4
 - 3-5 Timing Recovery..... 5

Chapter 1 Overview

1-1 What's ezTime™?

ezTime™ is a useful tool of HDDGuarder™ to enhance its features.

- Example 1. In a computer classroom, all PCs keep power-on from 8:00 to 20:00. If the teacher wants that HDD will be recovered automatically at 8:00, 10:00, 12:00, 14:00, 16:00, 18:00 for every lesson, **how can the HDD recovery card do for him?**
- Example 2. A nobody-care computer, such as city traffic electronic-policeman, is 7-day-24-hour power-on, **how does the HDD recovery card recover its HDD automatically on the pre-set time every day to ensure its software system stable?**

Now, ezTime™ can do this job for you.

1-2 How does ezTime™ work?

To state how ezTime™ works, we assume that ezTime™ is set as "From 8 every 2 hours for 4 times" "Every Day".

- "From 8 every 2 hours for 5 times" means – if you power-on PC between 8:00 and 9:59:59, or between 10:00 and 11:59:59, or between 12:00 and 13:59:59, or between 14:00 and 15:59:59, or between 16:00 and 17:59:59, auto-recovery will happen **ONE** time in each period of time. For instance, you power-on PC on 8 o'clock, after Windows boots up, ezTime™ will reboot PC automatically and do recovery, then you reboot PC before 9:59:59, ezTime™ will not do recovery once more.
- "From 8 every 2 hours for 5 times" also means – if you power-on PC before 8:00 and keep it power-on whole day, PC will reboot and be recovered automatically **FIVE** times at 8:00, 10:00, 12:00, 14:00 and 16:00.
- Once Windows boots up, ezTime™ will be loaded into memory. It checks "Recovery Day" and "Recovery Time", if need, it will reboot PC right now and recover HDD, or reside in memory and be watching the system time and re-check its configuration.

Chapter 2 Installation/Un-installation

2-1 Very Important

- If you want to use both ezcontrol and eztime, you should install ezcontrol before installation of eztime(only for Version of ezcontrol less V3.50)
- Under set parameter screen of card (under DOS), it should be set as manual recovery or manual recovery with password.

2-2 Environment

- HDDGuarder™ recovery card installed.
- OS is Microsoft® Windows.

2-3 Installation Steps

- If HDDGuarder™ recovery card installed, please reboot PC, enter into "Open Mode".
- Run ezTimeInstall.EXE, press button <Install ezTime> and then <Ok>.
- Reboot PC, install HDDGuarder™ recovery card and configure it properly, enter into "Protected Mode".
- On the desktop, there is "ezTime" shortcut; on the Windows tray (screen's right-bottom), there is "ezTime" icon.

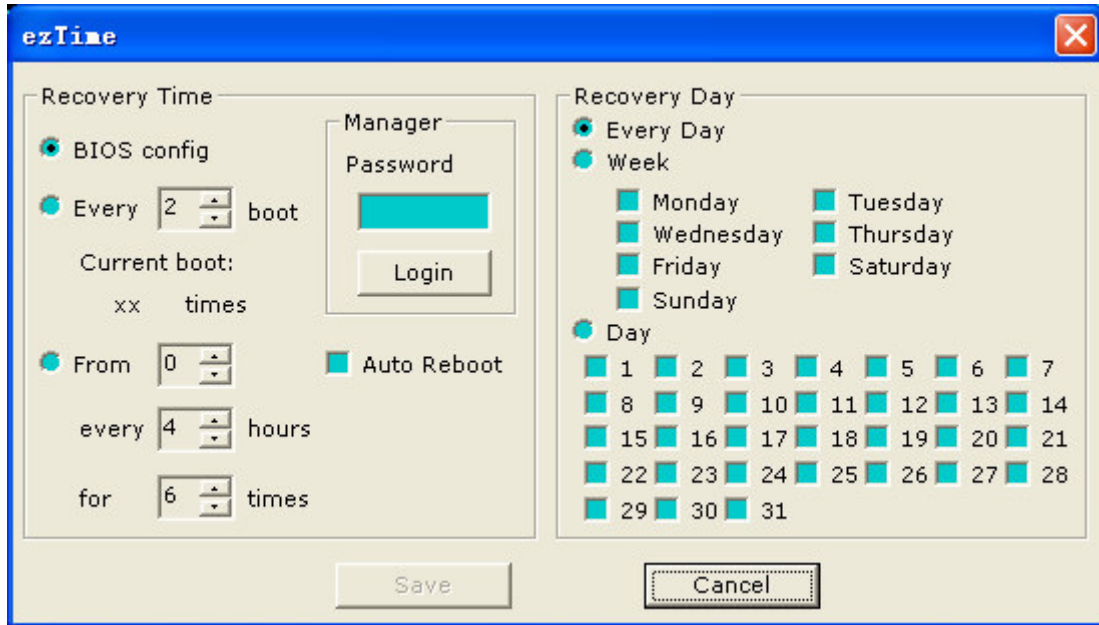
2-4 Un-installation Steps

- If HDDGuarder™ recovery card installed, please reboot PC, enter into "Open Mode".
- Run ezTimeInstall.EXE, press button <Uninstall ezTime> and then <Ok>.
- Reboot PC, install HDDGuarder™ recovery card and configure it properly, enter into "Protected Mode".
- On the desktop, the "ezTime" shortcut is deleted; on the Windows tray (screen's right-bottom), there is no "ezTime" icon.

Chapter 3 User Guide

3-1 Interface

Left-click **ezTime™** icon on the Windows tray, the following box will appear on the Windows desktop. As default, the "Recovery Time" is "BIOS config", the "Recovery Day" is "Every Day", and all of other boxes are cleared, the button <Save> is gray and disabled.



3-2 Only Manager Can Save ezTime™ Configuration

If you do not login, you are not allowed to save **ezTime™** configuration. The manager password is the one that is set on recovery card BIOS interface.

If you do not login, the button <Save> is gray and disabled. After you have logged in, the button <Save> is black and active.

3-3 Recovery Day

"Recovery Day" sets what day **ezTime™** checks "Recovery Time". If the date is not matched with "Recovery Day", "Recovery Time" will not be checked and no auto-recovery will happen, i.e. **ezTime™** will do nothing.

- "Every Day": **ezTime™** checks "Recovery Time" every day.
- "Week": **ezTime™** checks "Recovery Time" on what day of the week.
For instant, if you choose "Week" and mark "Monday" only, **ezTime™** will check "Recovery Time" ONLY on Monday.
- "Day": **ezTime™** checks "Recovery Time" on what day of the month.
For instant, if you choose "Day" and mark "1" only, **ezTime™** will check "Recovery Time" ONLY on the 1st day every month.

3-4 Recovery Time

Note: If the date is not matched with "Recovery Day", "Recovery Time" will not be checked and no auto-recovery will happen.

"Recovery Time" sets what time **ezTime™** will reboot PC and recover HDD automatically.

- "BIOS config": **ezTime™** will do nothing, the recovery interval is set on recovery card BIOS interface.
- "Every n boot": n MUST be ≥ 2 , and should be ≤ 99 .
For instant, "Every 2 boot" means – boot PC for the 1st time normally, but for the 2nd time, **ezTime™** will reboot PC and recover HDD automatically.
"Current boot: n times" shows the current boot times. If "Every n boot" not chosen, "n" will not be numeral but a cross "x".
- "From B every H hours for T times": whether PC is powered-on or is kept power-on whole day, **ezTime™** will reboot PC and recover HDD automatically in the pre-set period of time.

Recover 1 time every day: "From 0 every 24 hours for 1 times".

Recover 2 time every day: "**From 0 every 12 hours for 2 times**".

"**From 8 every 2 hours for 5 times**" means – if you power-on PC between 8:00 and 9:59:59, or between 10:00 and 11:59:59, or between 12:00 and 13:59:59, or between 14:00 and 15:59:59, or between 16:00 and 17:59:59, auto-recovery will happen **ONE** time in each period of time. For instance, you power-on PC on 8 o'clock, after Windows boots up, **ezTime™** will reboot PC automatically and do recovery, then you reboot PC before 9:59:59, **ezTime™** will not do recovery once more.

"**From 8 every 2 hours for 5 times**" also means – if you power-on PC before 8:00 and keep it power-on whole day, PC will reboot and be recovered automatically **FIVE** times at 8:00, 10:00, 12:00, 14:00 and 16:00.

3-5 Timing Recovery

For instant, **ezTime™** is set as "**From 8 every 2 hours for 5 times**", we power-on PC before 8:00 and keep it power-on whole day. At 8 o'clock, **ezTime™** will pop Figure 2 to inform the user, press button <**Ok**> to reboot PC right now, press button <**Cancel**> to pause **ezTime™** for 5 minutes, after 5 minutes, Figure 2 will be popped again.

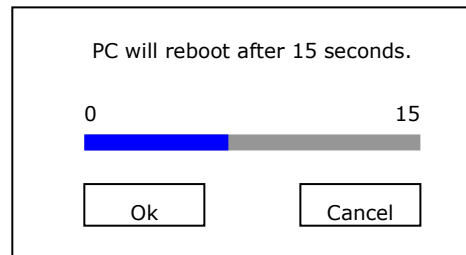


Figure 2